



Committed to QUALITY

HiTech
HI-TECH MACHINERY

ABOUT US

Established in 2007, Hi-Tech Machinery provides heavy engineering solutions and maintenance support to various industry sectors.

Our core competency lies in:

- Design and development, manufacturing, repair, reclamation, reconditioning of import substitute and OEM equipment.
- Precision machining of critical spares of turbines and boilers.
- Fabrication of heavy equipment for steel, cement, power, mining and various other industries.

With our strong design and engineering capabilities and profound industry experience, we provide high quality and cost competitive products with quick turn-around time.

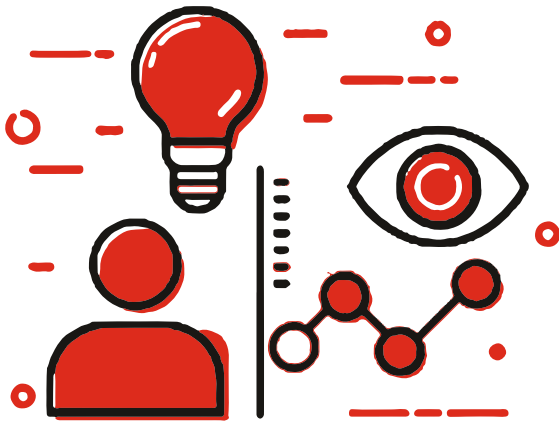
Over the years, Hi-Tech has become synonymous with uncompromising commitment to quality and delivery, and has emerged as one of the leading manufacturers in the industry.

Our state-of-the-art facility equipped with cutting-edge technology is strategically located in Central India - MIDC Butibori, Nagpur, which is well-connected by road, rail and air.





- To deliver high quality, world-class and cost-competitive products and unmatched services.
 - To go the 'extra mile' and 'exceed' clients' expectations.
 - To partner with clients and add value to their projects by looking at the big picture.
-



To emerge as a company with a global outlook and be a most preferred partner for heavy engineering companies. In turn, contribute towards development and growth of our nation.

Our mission drives us to achieve excellence and guides us towards realizing our vision.

MISSION AND VISION

OUR VALUES

Our five core values form the foundation and guidelines on which Hi-Tech employees perform their everyday work. In an ever-changing world, the core values of Hi-Tech are constant.



1. Client Centricity

Our clients are at the centre of our business philosophy. We work with our clients in an open and collaborative way to build lasting relationships.



2. Accountability

We follow best practices in the business. We are committed to deliver what the clients need in terms of value, quality and satisfaction.



3. Reliability

We maintain transparency and open communication with our clients. We deliver on our promises consistently and continuously.



4. Quality

We maintain highest quality standards and adhere to stringent norms and regulations.

We never compromise on quality. Our esteemed clients can vouch for it.



5. Safety

We believe safety preventive is fundamental to operational excellence. We focus on preventative safety practices and provide a healthy work environment.

Our five values are at the heart of everything we do; they guide our decisions and behaviours.



FACILITIES AT HI-TECH

- **3.5 Meter DIA, Height 2 meter** Vertical lathe machine.
- VMC Machine Hartford Make **table size 500 mm x 1000 mm**
- CNC Lathe **3 Meter** between Centre
- **125 mm** Horizontal boring machine
- **80 mm** Horizontal boring machine
- Heavy duty lathe, length **7 meter**
- Heavy duty lathe, length **4 meter**
- Heavy duty lathe, length **5.5 meter**
- Cylindrical grinding machine, length **2 meter**
- Hydraulic shaper **stroke 1000 mm**
- Heavy duty drill machine **75mm**
- Heavy duty drill machine **40mm**
- Small duty lathes
- Hydraulic Press machine 500 ton
- Hydraulic Press machine 100 ton
- Plate bending upto 20mm
- Plasma cutting machine
- MIG Welding machine
- Inverter based rectifier welding machines
- Plasma Spray Metalising
- Dynamic Balancing Machine
- EOT Crane 15 M.T. & 2 M.T.
- DRO installed on required machines
- Quality control with calibrated measuring instruments

PRODUCT PROFILE

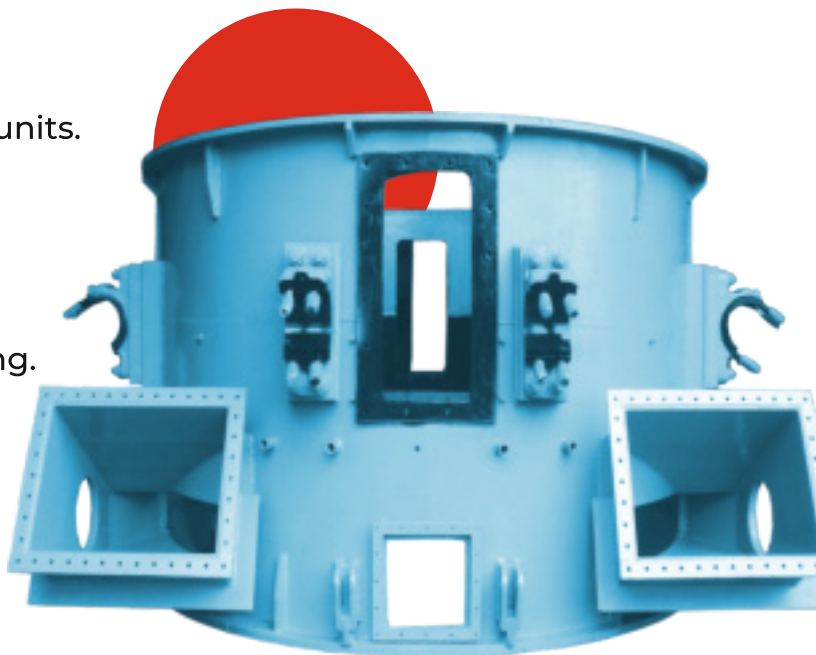
THERMAL POWER PLANT SPARES

- Vane Wheel Assembly with Liners for XRP 763/803/883/903/1003/1043 Coal Mills.
- Air Inlet Ring/ Grinding Table Hub Skirt for MVM 32R (660 MW) L&T make Coal Mills.
- Lower Journal and Upper Journal Housing for BHEL make XRP 883/1003/1043 Coal Mills.
- Worm Gear Hub/ Bowl Hub for XRP 763/803 Coal Mills.
- Separator Body with top cover and Journal opening doors for XRP 763/803 Coal Mills.
- Clamping Ring Segment for XRP 763/803/1043 Coal Mills.
- Labyrinth for XRP 903/1003/1043 Bowl Mills.
- Main Vertical Shaft for XRP 763/803 Coal Mills.
- Worm Shaft thrust bearing housing for XRP 763/803 Coal Mills.
- Inner Cone for XRP/763/803/1043 Coal Mills.
- Spiral bevel input pinion set for 8.5E Coal Mill Greaves make Gear box.
- Hydro pneumatic Loading cylinders for 8.5E Coal Mill.
- PF outlet box and Transition piece for BBD 4772 Coal Mill.
- Trunion Shaft with Journal Head Assembly for BHEL make XRP 763/803 Coal Mills.
- Shielding/ Cassette Baffle for Boilers
- Coal Burner Nozzle tips.
- End Air Compartment Assembly
 - ID Fan Shaft for 210 MW plant
 - CCW Pump Spares (Shafts, Sleeves, Couplings, Bowl, Cutless Bearing, etc.
 - CCW/CW Pump Impellers.
 - RAW water pump spares
 - Rotary Feeders
 - Ash Disposal pumps spares.
 - Pan for Apron feeder at CHP.
 - Critical spares for Gear box at CHP.
 - Crusher Rotor Shaft Assembly for CHP.



Repair/Reclamation & Refurbishment of Spares:

- Separator/ Scraper Body for XRP 763/803 Coal Mills.
- Lower journal/ Upper journal bearing housing for BHEL make XRP 763/803/1003/1043 Coal Mills.
- Worm Gear Hub/ Bowl Hub for XRP 763/803 Coal Mill.
- Vertical Shaft for XRP 763/803 Coal Mill.
- Rotary Mill Separator for MVM 32R (660 MW) L&T make Coal Mills.
- Densveyor for MVM 32R (660 MW) L&T make Coal Mills.
- Air Inlet Ring for MVM 32R (660 MW) L&T make Coal Mills.
- Reblading of PA Fan/ ID Fan Impeller with shaft for 210MW unit.
- Bowl & Bowl Hub for XRP 803 ½ HP Coal Mills.
- ID Fan Shaft for 210 MW unit.
- Gear Box assembly Greaves make for 8.5E Coal Mill.
- Yoke and spider assembly for 8.5E Coal Mill.
- Re-babbiting and machining of bearing housing of ID fan.
- CT fan drive shaft for cooling tower for 210 MW unit.
- Turbine Diaphragms for 210 MW unit.
- Turbine sealing rings for IP/HP/LP for 210 MW unit.
- CCW Pump spares (Bell mouth, Bowl, Impellers)
- Derator Level Control Valve.
- Turbine Valve Spindle & Bush.
- End Collar & Thrust Hub for TDBFP.
- Vacuum Pump spares.
- HP Pump/ Raw water pump spares
- Ash handling spares (Inner casing, outer casing, impellers etc.) for 210/250/500 MW units.
- Rotary Feeder for AHP.
- Pulleys of various sizes.
- Rotor Crusher Assembly for CHP
- Gearbox internals and Casing reconditioning.



CEMENT PLANT PRODUCT LIST

COOLER / KILN

- Driving Arm For Folax Cooler
- Bull Nose For Cooler
- Pull Rod & Connecting Rod
- Screw Conveyors
- Torsion Shaft & Gear Coupling
- Cooler Beams
- Klinker Crusher Rotor
- Deep Pan/Ducket Conveyor (DBC/DPC)

LIME STONE CRUSHER

Guide Wheels / Rollers For Limestone Crusher

A) Lime Stone Feeding System

I) Wobbler Shafts

B) Crusher Rotor or Impactor Rotor-grinding Path, Grinding Bed

C) Inlet / Outlet Rollers-Rollers, Shaft & Assembly

RAW MILL

- VRM Grinding Roller Body/Stop Plate/Axle Shaft
- Bucket For Bucket Elevator
- Rotor Shaft & Blower For Impactor Crusher
- Discharge Ring
- Articulation Head
- Pull Rod
- Joint Head
- Support Rail For Bucket Wheel Elevator
- Bottom Cover
- Bearing Cartridge Assembly
- Dam Ring
- Separator Rotor/ Cage Wheel

COAL MILL

- Separator Rotor/ Classifier Rotor Of Coal Crusher
- Rotary Air Lock(RAL)/ Star Feeder

PRODUCT
PROFILE



CEMENT MILL

- Impeller With Hub, Vanes Duly Hard Faced
- Guide Vanes For Separator Rotor
- Separator Rotor/ Cage Wheel
- Pull Rods, Tie Rods
- Rotary Air Lock(RAL)/ Star Feeder
- Feed / Discharge Head Rollers
- Roller Press-bearing Housing
- Bearing Cartridge Assembly
- Dam Ring

CAPTIVE POWER PLANT

- Bearing Housings, Shafts & Other Spares for Secondary Crusher
- Shielding On Boiler Tubes
- Mixing Nozzle Assembly

RAW MATERIAL HANDLING

- Bogie Wheel Assembly
- Drive Shaft & Sprocket Assembly for Stacker Reclaimer

REPAIR/RECONDITIONING

- Repairing of Cooler Driving Arm/Cooler Beams
- Repair of Gearbox
- Repair of Separator Rotor
- Repair of Fans & Shafts
- Repair of Buckets
- Repair of Apron Feeder Pans
- Repair of Pfister Rotor/Top Plate/Bottom Plate
- Repair of Rotary Air Lock
- Repair of Harrow Rail
- Repair of Roller Press Shaft
- Repair of Cage Pulley
- Repair of Wobbler Shaft
- Repair of Fk Pump Screw
- Repair of Atox Roller Hub & Cover
- Rebabbiting of White Metal Bearing Housing



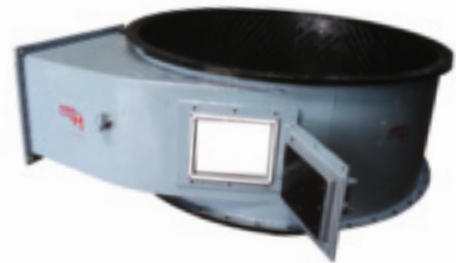
Manufacturing



VRM Roller Body



Upper Journal Housing
for BHEL make XRP-1043
Coal Mill



Scraper body for BHEL
make XRP-763 Coal Mill



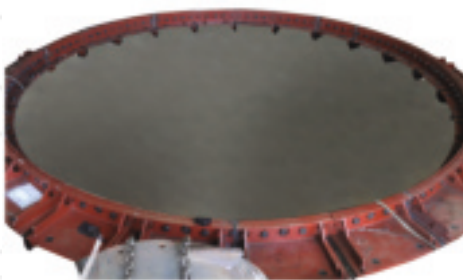
Wobbler Shaft



Bowl Hub for BHEL
make XRP-763 Coal Mill



Base Frame for Motor



Discharge Ring for
Raw Mill



Joint Head for
Atox make Raw Mill



Scraper Blade

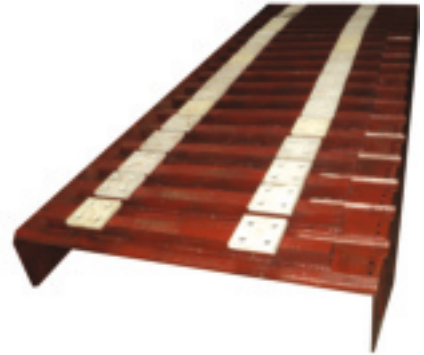
Manufacturing



Bottom Cover
for Atox Raw Mill



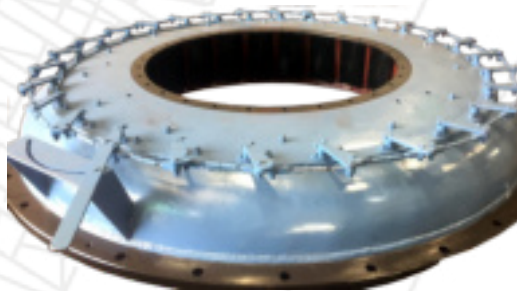
Bull Nose for Cooler



Pan for Apron Feeder



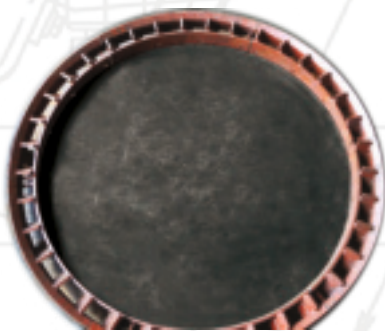
Tie Rods



Separator Top for
XRP-803 Coal Mill.



Cooler Beams for Cooler



Airport/Vane Wheel
Assembly for Coal Mill



Screw Conveyor in
Hardox 400 Material.

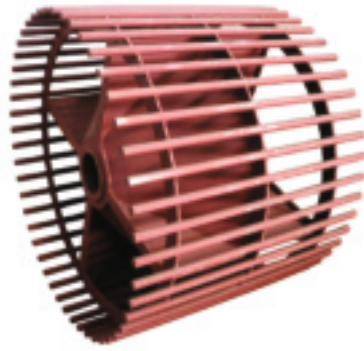


Bearing Cartridge
for Raw Mill

Reconditioning / Refurbishing



Bowl & Bowl Hub for
BHEL make XRP-803 1/2
HP Coal Mill



Cage Pulley



FK Pump Screw



PA Fan Impellers



HP Pump



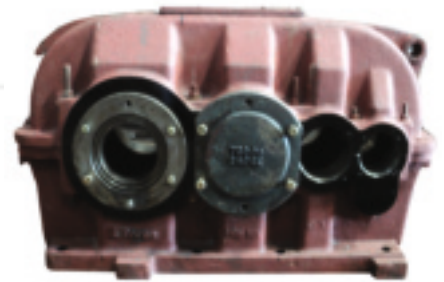
Separator Body for BHEL
make XRP-763 Coal Mill



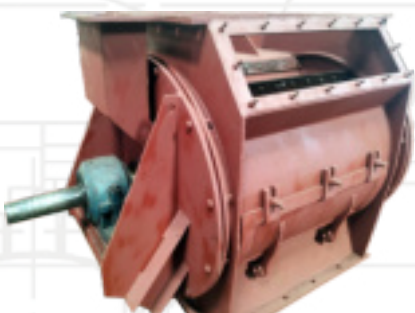
Gear box for Coal Mill



Vacuum Pump



Heavy Duty Gearboxes



Rotary Air Lock



CW Pump Impeller

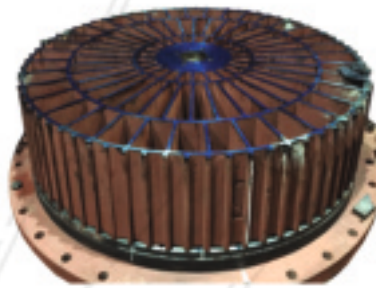


Rebabbiting of
White Metal Bearing

BEFORE - AFTER Reconditioning / Refurbishing



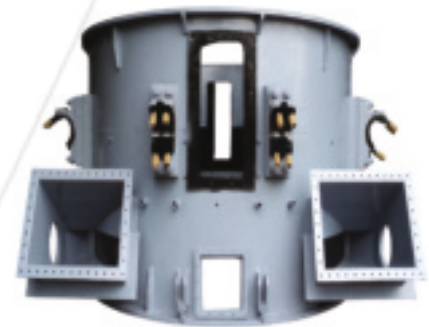
Before / Pfister Rotor



After / Pfister Rotor



Before / Separator Body



After / Separator Body



**Before / Pfister
Top Plate**



**After / Pfister
Top Plate**



Before / Separator Rotor



Before / Atox Roller Hub



After / Atox Roller Hub



After / Separator Rotor



**Before / Crusher Rotor
Assembly**



**After / Crusher Rotor
Assembly**

WHY CHOOSE HI-TECH

There are many facets that give us edge over the competition. Here are few of them:



----- **Hi-Tech Manufacturing Facility**

We have strategically located, excellent manufacturing facility with machineries equipped with leading and cutting-edge technology.



----- **Best Quality**

We deliver highest quality products, exceed clients' expectation and ensure customer satisfaction.



----- **Cost-Effective Products**

While maintaining highest quality, we ensure that our products are cost-effective.



----- **Quick Turnaround Time**

We follow a diligent work plan and well-planned schedule. Our innovative and technically sound engineers with perfect combination of experience and expertise deliver on time, every time.



----- **Excellent Team**

We have motivated and committed team with highly efficient organizational structure. Our Dedicated Team for each speciality such as Design, Development, Re-engineering, Manufacturing, Testing, etc. works efficiently on complex & intricate products.



----- **Customer Service**

We provide after sales service on site for our manufactured/reconditioned products. We also provide draftsman on site for critical items drawing development during shutdown at short notice.

OUR ESTEEMED CLIENTELE

POWER SECTOR



CEMENT SECTOR



STEEL SECTOR





HiTech

HI-TECH MACHINERY

WORKS

D-50, MIDC Butibori,
Opp. BPCL LPG Bottling Plant,
Nagpur - 441 104 | 77670 88772

OFFICE

Anil Brothers,
Opp. Tahsil Police Station,
Gandhibagh, Nagpur - 440 002

☎ 98230 52078/ 98223 66559
☎ 0712-2770101
✉ sales@hitechmachineryind.com
🌐 www.hitechmachineryind.com

Our Group Companies

